

OCEANIA OPEN (Wollongong) 2014

IJF world ranking points competition



Dear Friends

We are glad to welcome you to Wollongong, Australia this November 2014.

This is the first time that Australia will host the OJU Oceania Open and we are looking forward to welcoming all guests, officials and athletes from member federations to our shores.

We encourage all judoka to support our event and seek IJF World Ranking List points. Wollongong is easily accessible and we hope that you can make the OJU Oceania Open part of your judo circuit.

We hope that all participants and guests will be delighted with the quality of our organisation and you leave with good impressions of the warm, sunny and relaxed coastal city of Wollongong.

Thank you and welcome to Australia!

Judo Federation of Australia



OCEANIA OPEN (Wollongong) 2014

IJF world ranking points competition

1. PROGRAM

DATE	TIME	ACTIVITY	LOCATION
Tuesday 11 November	16.00 – 18.00	Arrival of OJU Officials / Arrival of Delegations Registration – control of entries, nationality & outstanding accreditations	WIN Sports & Entertainment Centres
Wednesday 12 November	9.00 – 12.00	Registration – control of entries, nationality & outstanding accreditations	WIN Sports & Entertainment Centres
Thursday 13 November	16.00 Immediately after the draw 18.00 – 18.30	Team Managers Meeting and Draw Referee meeting Official weigh-in Women: -48kg, -52kg, -57kg, -63kg Men: -60 kg, -66 kg, -73kg	WIN Sports & Entertainment Centres
Friday 14 November	9.00 Prior to finals 14.00 18.00 – 18.30	Preliminaries on 2 mats Women: -48kg, -52kg, -57kg, -63kg Men: -60 kg, -66 kg, -73kg Opening ceremony Final block of medal matches on 2 mats (bronze and gold contests) Official weigh-in Women: -70kg, -78kg, +78kg Men: -81kg, -90kg, -100kg, +100kg	WIN Sports & Entertainment Centres
Saturday 15 November	9.00 30 mins after preliminaries	Preliminaries Women: -70kg, -78kg, +78kg Men: -81kg, -90kg, -100kg, +100kg Final block of medal matches on 2 mats (bronze and gold contests)	WIN Sports & Entertainment Centres
Sunday 16 November		Departure of delegations Training camp	
Monday 17 November		Training camp	
Tuesday 18 November		Departure of delegations	

OCEANIA OPEN (Wollongong) 2014

IJF world ranking points competition

2. ORGANISERS

Judo Federation of Australia

O'Malley Park
27/10 Taronga Place, O'Malley, ACT, Australia.

Applications for accommodation and airport transfer to be sent to the following email.
Email: luisval@inet.net.au

3. COMPETITION VENUE

WIN Sports and Entertainment Centres

Address: Corner of Crown and Harbour Streets, Wollongong
(walking distance from all official hotels)

4. OFFICIAL HOTELS

Chifley Hotel Wollongong 4.5 star

Headquarter hotel

Distance from venue: 50m

Single room – 1 person \$220 AUS per night

Double/twin room – 2 people \$240 AUS per night

Breakfast: \$30 per person, per day



Facilities:

- 24 hour reception
- Business centre with complimentary internet
- Heated 20 metre lap pool and gymnasium
- Secure on-site undercover parking
- C Grill Restaurant with alfresco dining
- Lobby bar for light meals
- 24 hour room service



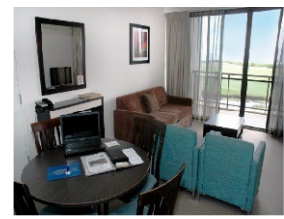
The Chifley Hotel is offering a number of higher rated rooms for the price of deluxe rooms. These limited rooms will be offered to National Federations that reserve and make payment on a first come first served basis.

OCEANIA OPEN (Wollongong) 2014

IJF world ranking points competition

Best Western City Sands Hotel 4 star

Distance from venue: 600m
Single room – 1 person \$230 per night
Double/twin room – 2 people \$240 per night
with one person sleeping on sofa bed
2 bedroom 2 bathroom unit with sofa bed - \$335
per night



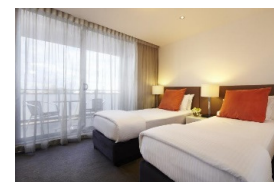
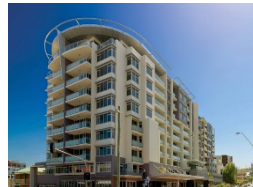
Quest Apartments 4.5 Star

Distance from venue: 700m
Single room – 1 person \$225 AUS per night
Double/twin room – 2 people \$340 AUS per
night



Adina Apartment Hotel 4.5 star

Distance from venue: 500m
Single room – 1 person \$235 AUS per night
Double/twin room – 2 people \$470 AUS per
night



Novotel 4.5 star

Distance from venue: 1.6km (leisurely 20 minutes walk)

Single, Residential room - 1 person \$285 AUS per night
Double/twin - Residential room 2 people \$300 AUS per night
Single, Ocean View room - 1 person \$310 AUS per night
Double/twin - Ocean View room 2 people \$325 AUS per night
Single, Ocean View balcony room - 1 person \$350 AUS per night
Double/twin - Ocean View balcony room 2 people \$365 AUS per
night
Breakfast: \$32 per person per day



City Beach Motel – 3 star

Distance from venue: 100m from venue
Double: 2 people \$180 AUS per night



Hotel reservations can ONLY be made through the Organiser on a first come first served basis. Hotel reservations must be made before **10 October, 2014**.

Full payment, including all bank fees and bank transfer costs are to be paid by the participating federation and must be received **before 20 October, 2014** (Bank transfer account information provided below).

The completed accommodation application form must be sent to luisval@iinet.net.au

Delegates accommodated in non-official hotels will pay an accreditation fee of \$150 AUS) per athlete and delegate.

OCEANIA OPEN (Wollongong) 2014

IJF world ranking points competition

Cancellation fees:

25-10 days prior to 13 November 2014 - 50% of the payment.

After 4 November 2014 any cancellation of rooms or no-show will result in 100% of the charge of the hotel costs that must be paid by the National Federations.

Cancellation of the rooms cannot be made at check-in.

Injuries, visa problems or sickness are not valid reasons for the cancellation of rooms.

IMPORTANT: Damage to hotel property or venues and other charges resulting from the stay of a national delegation will be charged to the National Federation and must be paid in full.

Extra rooms at check-in will be subject to availability and a surcharge will apply.

HOTEL BOOKING INFORMATION

- 1) On the basis of the accommodation request an invoice for payment will be made by email.
- 2) After the receipt of funds (100%) a confirmation letter is issued with all the details of the reservation.
- 3) Hotel check-in time is 14:00, check-out time is 10:00.
- 4) Extra services (mini-bar, telephone calls, laundry services, taxi etc.) will be charged on the guest's account and is the responsibility of guests.

Bank transfer account

Please input the bank information correctly and fully on the transfer document, any procedure related to amendment for the bank transfer has to be done by the participating team before arrival.

Beneficiary's Name: Judo Federation of Australia Inc
Bank Name: Westpac
BSB: 032-275
Bank A/C No: 19-5683
SWIFT Code: WPACAU2S
Reference: OJU Oceania Open – Accommodation

5. Entry fee

An OJU entry fee of \$100 US per athlete should be paid to the following bank account.

Account: 378083-USD-3740-01
Account holder: Oceania Judo Union
Bank: Westpac Banking Corporation
Branch: Newmarket, Auckland, New Zealand
Swift Code: WPACNZ2W

There is also the ability to pay the entry fee, in cash, at Registration.

6. LAND TRANSPORT

The Organiser will provide free of charge transportation to and from the Sydney International Airport and the hotel for competing delegations who arrange accommodation with the organiser.

The transfer will be scheduled according to flight details provided to the Organising Committee.

7. INSURANCE

Each National Federation is responsible for its competitors (the control of non-pregnancy as well as gender control is the responsibility of National Federations) and must assume all responsibility for accident and health insurance as well as civil liabilities for their competitors and officials during the 2014 OJU Oceania Open.

The organiser of the 2014 OJU Oceania Open and the IJF, including the OJU and the JFA, will not be responsible for any insurance related to the above mentioned matters. The Judo Federation of Australia will take all necessary actions to provide insurance coverage against civil liability for the entire duration. In addition, the organiser of the event and the IJF has no liability for any claims of injury, illness or death arising out of the participation and travel in connection with this tournament.

8. DEADLINES FOR APPLICATIONS

First Entry (entry by number):	1 October, 2014
Visa request (with passport copies):	1 October, 2014
Hotel Reservation:	10 October, 2014
Hotel payment:	20 October, 2014
Travel information:	20 October, 2014
Entry fees	20 October, 2014
Media accreditation	20 October, 2014

Final Entry (entry by names): The registration must be done with the IJF online registration system at <https://www.judobase.org> until **10 October, 2014, 23:59 CET**.

Nations missing the registration deadline will not be allowed to start. No exceptions will be made. All competitors, coaches and officials must be entered in time. After the deadline no additional persons can be added.

NOTE: It will be allowed to replace already registered coaches or officials; competitors only in the case of an injury.

For any support please contact registration@ijf.org before the end of the deadline.

9. CONTROL OF ENTRIES & ACCREDITATION

The control of entries and issuing of outstanding accreditation cards will take place at the WIN Sports and Entertainment Centres on:

- a. 11 November, 2014 from 16:00 to 18:00
- b. 12 November, 2014 from 09:00 to 12:00

At least one team official must attend during these times to confirm the entries of all athletes and officials with his/her signature. A delayed appearance or no-show at control of entries may result in the exclusion of all participants from the draw and the event. In the case of an unforeseen delay of arrival the Federation must immediately contact the organiser (luisval@iinet.net.au) and the IJF registration team (registration@ijf.org)

An accreditation card with photograph will be issued to competitors, officials and media. This accreditation card should be carried at all times.

Passports or photocopy of passports from all competitors must be presented.

Number of accreditations for officials:

- 1 – 4 competitors: 4 officials
- 5 – 9 competitors: 6 officials
- more than 10 competitors 7 officials

Extra accreditation for delegation members will be charged at \$80 AUS for 2 days.

OCEANIA OPEN (Wollongong) 2014

IJF world ranking points competition

10. NUMBER OF PARTICIPANTS

Each Country: Maximum of 4 competitors per weight category
Organising Nation: Maximum of 4 competitors per weight category

Note:

- competitors can only be entered in one weight category
- only entries of National Judo Federations – IJF Members will be accepted

Age: Participating athletes must be 15 years in the calendar year or before.

11. COMPETITION RULES

- The competition will be conducted in accordance with the latest IJF SOR, IJF Refereeing Rules and IJF Anti-Doping Rules. Especially refer to the New IJF Tournament System Quarterfinal (last 8) repechage.
- Weight categories:
 - Men: -60kg, -66kg, -73kg, -81kg, -90kg, -100kg, +100kg
 - Women: -48kg, -52kg, -57kg, -63kg, -70kg, -78kg, +78kg
- Duration of contest: MEN 5 minutes & WOMEN 4 minutes (real time).

12. REFEREES

Referees are appointed by IJF/OJU Refereeing Commission.

13. WEIGH-IN

- The weigh-in will be carried out in accordance with the IJF SOR, Article 16.
- The athlete's official weigh-in will be scheduled the day before the competition:
 - unofficial weigh-in: scales will be available for teams at the venue**
 - official weigh-in: 18:00 to 18:30 (the day before competition)**
- The weigh-in will be held in the competition venue.

14. DRAW

- The team managers meeting followed by the draw will be conducted at **16.00 at the WIN Sports and Entertainment Centres (competition venue) on 13 November 2014.**
- Each National Federation must send at least one delegate to attend the draw but not exceed three delegates. Collar and tie for males is required. Formal dress attire for females.
- The top eight (8) from the entered competitors in each weight category will be seeded according to the current World Ranking List. The rest of the draw will be by separation of nations.

15. JUDO GI CONTROL

- Approved judogi:** Competitors shall wear an IJF approved judogi supplied by one of the following manufacturers: Greenhill, SFJAM NORIS, DANRHO, MIZUNO, Double D Adidas, HAYAKAWA, Fighting Film, Budo Sport AG, ESSIMO, MATSURU B.V, KAPPA, DAO Korea.
- Judogi Control:** Gi control will be operated with a sokuteiki by the OJU Education Commission prior to the match. The judogi must have an IJF Official Label "APPROVED JUDO GI" with an optical code which cannot be falsified. The label will be controlled with an optical lamp. Each of the competition clothing articles (jacket, trousers and belt) must have an IJF official label.

- c) **Back number:** Each competitor is obliged to have sewn on the back of their judogi a back number bearing their surname and their National Olympic Committee abbreviation. The back numbers must be fixed horizontally and centred on the back of the judogi. They must be placed at a distance of 3cm from the bottom of the collar. The back number can only be ordered from www.ijfbacknumber.com or www.mybacknumber.com
- d) **Advertising:** Competitors should carry on the back of their jacket the IJF and organiser dedicated sponsors of the event. Advertising on the judogi must be in compliance with the IJF regulations. Refer to Guidance of Judogi Control Document published on 15.06.2011.
- e) **National Emblem:** Athletes can have their national emblem on the left front part of the jacket within a space of 100cm².

If an athlete does not respect the judogi rules, the coach who is responsible for the athlete will be suspended for the rest of the competition of the day. In the case of a repeated offence the coach would then be suspended for the rest of the competition.

16. PARTICULAR RULES FOR WOMEN

Female contestants shall wear under the jacket either, a round necked plain white or off-white tee shirt, with short sleeves, made of non-rigid material, long enough to be worn inside the trousers, or a plain white or off-white leotard with short sleeves. No marking should be visible when the judogi is done up. All other regulations must be adhered to.

17. COACHING

Code of behaviour of coaches as defined in the Sports and Organisation Rules, Annex 4 will be strictly observed, inclusive of the Dress Code.

- Coaches are not allowed to give instructions to the competitors while they are competing.
- Only during the pause time (after matte), will coaches be permitted to give instructions to their athletes.
- After the pause is finished, and the fight continues (hajime), coaches must keep silent.
- If a coach does not follow these rules, they can be expelled from the competition area.
- If the coach persists with this behaviour from outside the competition area, they could be penalised.

18. ANTI-DOPING CONTROL

Anti-doping control will be undertaken in each category.

Selection by a draw of the anti-doping will be undertaken by the OJU Sports Director and determined prior to the start of the finals block.

The competitors have to report to the Doping Control Station no later than 60 minutes after the signed Notification form, in writing by the Physician mandated by the OJU and must follow the indications leading them to the check station. In that period of 60 minutes, athletes are allowed to take part in the awarding ceremony and to fulfil their press commitments. They will be constantly accompanied by an official chaperone from the organisation from the time they receive their notice until they reach the Doping Control Station. A person of their choice (team doctor, coach, trainer, delegation head) may accompany them.

19. AWARDS

Medals will be presented to medallists.

20. TRAINING FACILITIES

Scheduling of the training sessions will be organised based on requests made by the National Federation and will be arranged on a first requested daily basis.

21. VISA

The Organiser will attempt to facilitate countries in obtaining visas for athletes and officials. Nations, who need VISAS to enter Australia, please send the Organiser (email: luisval@iinet.net.au) as soon as possible (latest 1 October 2014) with appropriate details according to the visa application form.

22. FUNDAMENTAL PRINCIPLE

All National Federations, officials, coaches and athletes participating in the 2014 OJU Oceania Open have to respect and accept the authority of all officials, the Statutes, the Sports and Organization Rules, the Refereeing Rules of the International Judo Federation, as well as the IJF Anti-doping Rules. According to the IJF Rules and SOR Provisions (point 23.8), individuals deemed to have acted against the IJF, its principles or purposes shall be subject to suspension or expulsion from the event and/or cancellation of their accreditation cards.

23. MEDAL CEREMONY

Competitors shall wear their white judogi (no shoes, flip flops or socks) and stand behind the podium according to the following order 2,1,3,3. Every competitor to be awarded a medal has to attend the ceremony to receive their medal in person. If a competitor is absent during the awarding ceremony without a valid reason they will lose their right to receive the medal. It is strictly forbidden for competitors on the podium to bring national flags or similar identification other than the one represented in the regular manner on their equipment. Any demonstration of religious, political, personal or commercial sign is prohibited and so is wearing a cap or any other head cover.

**WE LOOK FORWARD TO WELCOMING YOU TO
WOLLONGONG AUSTRALIA**